



Colliers

111-01 14th Avenue | College Point, NY

*Ample
Parking*

*Close
to Multiple
Bus Stops*

*Office
Space*

SUBLEASE

through
February 28th, 2024

111-01

14th Avenue

COLLEGE POINT, NY

Colliers

BUILDING DETAILS

- High ceilings
- Elevators
- High tech atmosphere and design
- On-site café
- Financially sound Landlord and Sublandlord
- Long term extensions available

HIGHLIGHTS

- 50+ parking spaces
- Walking distance to Q65 bus transit
- Close to the Van Wyck Expressway (Exit 16) and the Cross Island Parkway (Exit 36)

10,000-20,000

SQUARE FEET

SUBLEASE PRICE UPON REQUEST

TERM THROUGH 2/28/2024

www.colliers.com/en-us/longisland < [VIEW ONLINE](#)

Colliers

111-01

14th Avenue

COLLEGE POINT, NY

10,000 SF
Second Floor

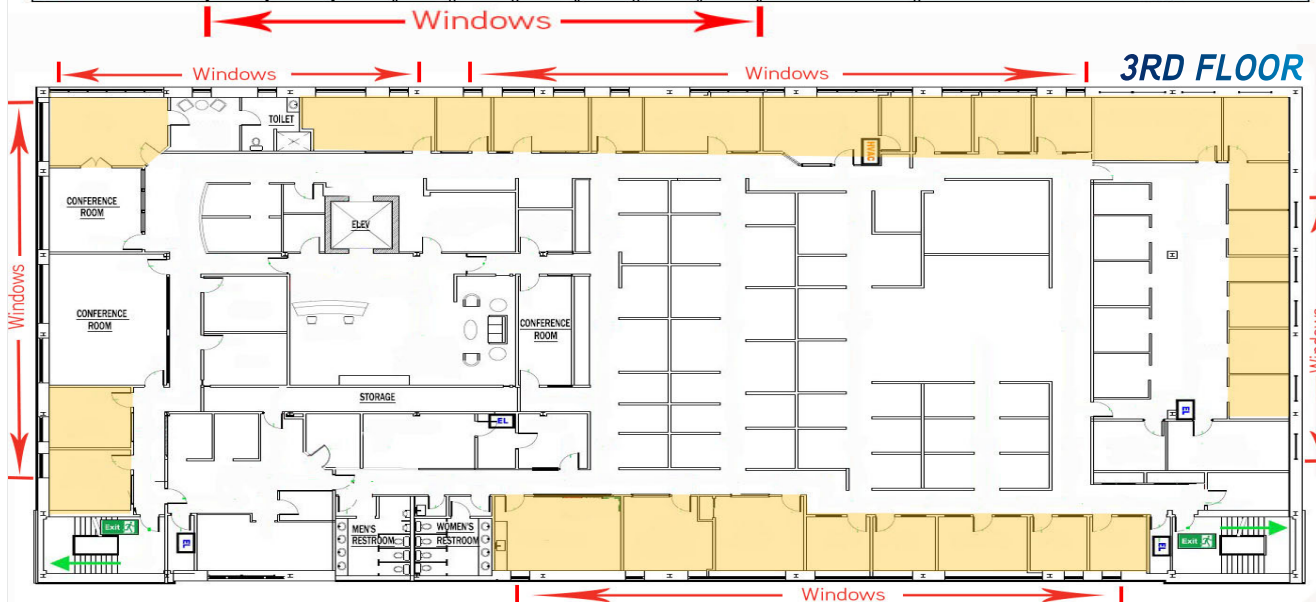
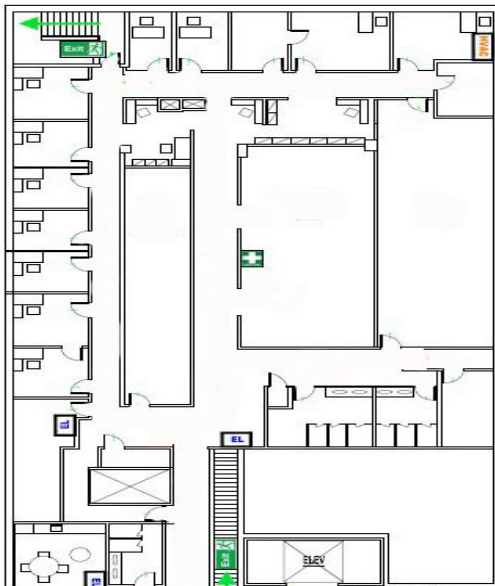
20,000 SF
Third Floor

Floor Plans

20+ offices with
abundant window lines
on the 3rd floor

Indicates Private Offices

2ND FLOOR



Copyright © 2019 Colliers International.
Information herein has been obtained from sources deemed
reliable, however its accuracy cannot be guaranteed.
The user is required to conduct their own
due diligence and verification.

Colliers

111-01
14th Avenue

COLLEGE POINT, NY

EXCLUSIVE AGENTS

GUS NUZZOLESE, Esq.

516 284 3456 | DIRECT

EXECUTIVE MANAGING DIRECTOR

LONG ISLAND, NY

gus.nuzzolese@colliers.com

ERNEST DELUCIA

203 961 6566 | DIRECT

SENIOR MANAGING DIRECTOR

STAMFORD, CT

ernest.delucia@colliers.com

Copyright © 2021 Colliers International.
Information herein has been obtained from
sources deemed reliable, however its accuracy
cannot be guaranteed. The user is required to conduct
their own due diligence and verification.

